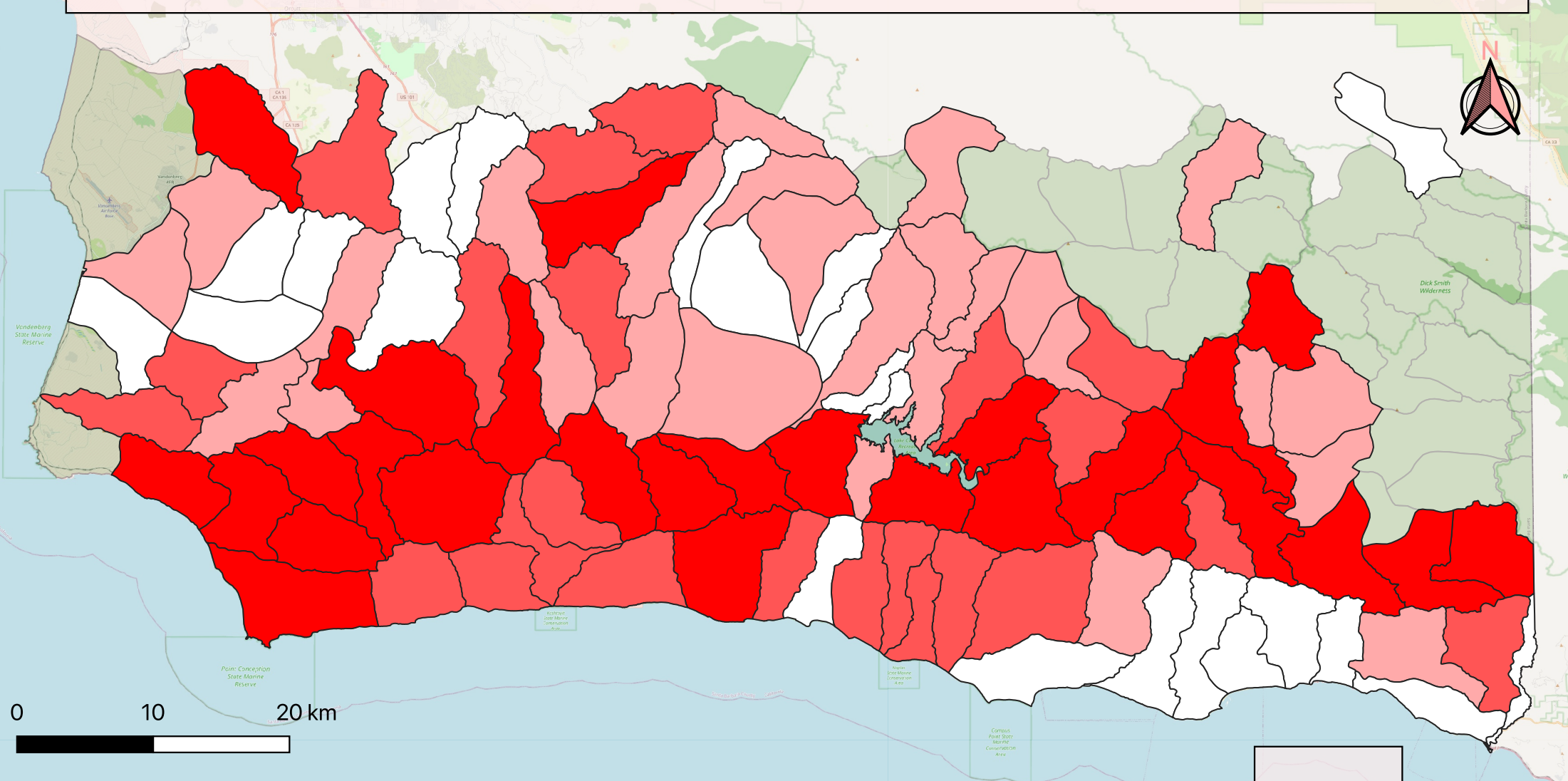


Multicriteria Analysis of Conservation Potential of Watersheds in Santa Barbara County



This map displays the conservation potential and subsequent priority of watersheds in Santa Barbara County based on the following parameters: proximity to streams and vegetative growth (high priority), visibility from established observation points and gentle slopes (medium priority), and land availability and cost (low priority). Tier 1 is the quartile with the highest conservation potential, followed by Tiers 2, 3, and 4. Watersheds listed as "n/a" did not meet sufficient threshold for conservation.

Map made on 2021-03-10 by Matt Koller. Data: 30m Digital Elevation Model (DEM), USGS, 2009; Landsat 7 ETM+, USGS, 2005; Watersheds, CalWater, 2004 via CaSIL; Streams, SBCGIS2002; Parcels SBCGIS, 2009; ROI, Observation Points; ESM 263.

Priority Level

- Tier 1
- Tier 2
- Tier 3
- Tier 4